

Brother

designer
knits



2



3

4



5



6



7





8

9



PATTERN NUMBERS

- 1 Tuck stitch yoked top
- 2 Long line top
- 3 Batwing sweater
- 4 Four colour sweater
- 5 Chunky button up
- 6 Party poodle suit
- 7 Short sleeve chunky
- 8 Teenage suit
- 9 Dress & jacket
- 10 Long sleeve chunky
- 11 V Back suit
- 12 Ribboned cardigan
- 13 Straight suit
- 14 Lace collar top
- 15 Frilled top suit
- 16 Tuck lace sweater
- 17 Striped top
- 18 Party poodle top

Note:- Pattern Nos 5, 7, 10, are knitted on
Chunky Machines

Photography by Tony Cambio
At Tony Cambio Photography,
Little Addington,
Northants.

Copyright © 1985
Juval Designs,
exclusive for B.S.K. Ltd, Bedford

ABBREVIATIONS

Alt.	Alternate
Approx.	Approximate
Beg.	Beginning
Carr.	Carriage
Cm/s.	Centimetre/s
Cent.	Centre
C.on	Cast on
C.off	Cast off
Col.	Colour
Cont.	Continue
Dec.	Decrease
Ev.	Every
FF.	Fully Fashioned
Foll.	Following
HP	Holding position
In/s	Inch/es
Inc.	Increase
K.	Knit
Mach.	Machine
M/bed	Main bed
MT	Main Tension
MT - 1	Main Tension - 1
MT + 1	Main Tension + 1
MY	Main Yarn
N/s	Needle/s
NWP	Non working position
Oppos.	Opposite
Patt.	Pattern
RC	Row Counter
R/s	Row/s
Rel.	Release
Rem.	Remaining
Rep.	Repeat
Rev.	Reversing
St/s	Stitch/es
SS	Stocking stitch
Trans.	Transfer
WP	Working position
WY	Waste yarn

Note: - Rib Tensions
T1/1 = Tension 1 on both beds
T10/8 = Tension 10 on main bed
Tension 8 on ribber bed

If you have any difficulty in obtaining any of the yarns used
in this pattern book please write to:-

B.S.K. Ltd,
Murdock Road,
Manton Industrial Estate,
Bedford,
MK41 7LE

for the name and address of your nearest stockist.

Whilst every care is taken to ensure the
accuracy of the patterns in this book, the
publisher accepts no responsibility
whatsoever for any damage, loss or the
like arising from their use.



1 TUCK STITCH YOKED TOP

SIZES:-

30/32 (34/36) in. bust
76/81 (86/91) cms. bust

MATERIALS:-

1 Cone Shimmer
Glass beads
Card 10 as shown on page 11

TENSION:-

50 sts. × 32 rs. = 10 cms.
Tension dial approx. 2 over SS
Steam pressed
26 sts. × 40 rs. = 10 cms.
Tension dial approx. 7
over tuck patt. using 2 strands

FOR ABBREVIATIONS:- SEE PAGE 9.

RIGHT FRONT & LEFT BACK

(knit two)
C. on in WY, 114 (126) sts.
K. few rs. Carr. at right.
RC000, MT, K. 170 rs.
C. off 15 sts. beg. next r.

Cont. to K. until RC 250.
Rel. work on WY.

LEFT FRONT & RIGHT BACK

(Knit two)
K. as for right, rev. shaping.

Join cent. seam of two pieces leaving
14 cms. opening at top on front.
Steam press each piece.

BACK. YOKE

Insert card & lock to K. row 1.
Bring forward 66 (74) ns.
With right side facing pick up sts. from
WY. placing 3 sts. on each n.
RC 000, MT, Set mach. for Tuck.
K. 54 rs. C. off 13 (17) sts. beg. next 2 rs.
Rel. work on WY.

RIGHT YOKE

Insert card & lock to K. row 1. Bring
forward 33 (37) ns.

With right side of work facing pick up
sts. from one side of front placing 3 sts.
on each n.
RC 000, MT, Set mach. for tuck
K. 20 rs. Carr. at right.
Always taking yarn round last n. in HP
Push 6 sts. at oppo. end to Carr. into
HP next r. K. 1 r. Push 4 sts. into HP
next r. K. 1 r. Push 2 sts. into HP next &
foll. alt. rs. 5 times. 13 (17) sts. rem.
Cont. to K. until RC 54.
C. off.
Press with steam iron.

LEFT YOKE

K. as for right, rev. all shaping.
Press with steam iron.

SLEEVES

Knitted in two halves.
C. on in WY 125 sts.
K. few rs. Carr. at right.
RC 000, MT, K. 200 rs.
C. off.
Knit second half to match.
Steam press. Join sleeve from * to * or
join using 4 glass buttons.
*Work 2 rs. double crochet along left
side of one half & 1 row double crochet
along right half.
DO NOT BREAK YARN.
WORK JOINING ROW.
Place hook through both pieces of
work, work 1 double crochet, repeat in
next st.
*Work 10 double crochet along next
10 sts. of side with 1 row worked, work
1 double crochet into both pieces next
2 sts.*
Rep. to end.*

CUFFS

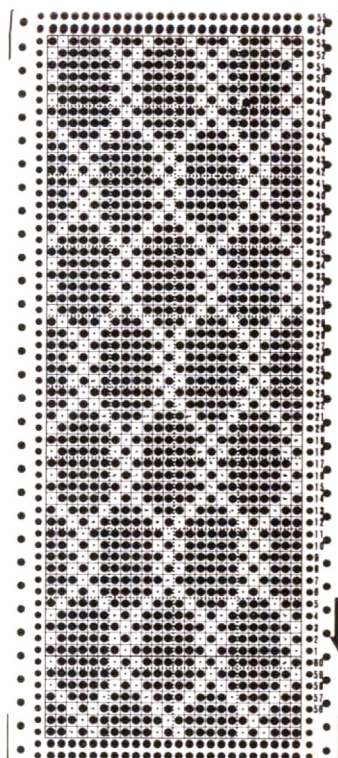
Insert card and lock to K. row 1.
Bring forward 50 sts.
With right side facing, pick up sts.
from sleeve edge, placing 5 sts. on
each n.
RC 000, MT, working in Tuck.
K. 30 rs. Rel. work on WY.

NECKBAND

Insert card and lock to K. row 1.
Bring forward 104 ns.
With wrong side facing, pick up sts.
around neck.
RC 000, MT-1. Working in Tuck
K. 84 rs. C. off.

TO MAKE UP

Join shoulder seams.
Sew C. off edge of sleeves to body.
Fold neckband to inside and slip st.
down open sts.
Join side and underarm sleeve seams.
Using 1 end of yarn - work 2 rs. double
crochet around neck opening, through
open sts. on cuffs and around hem,
working buttonholes at front neck.
STEAM PRESS.
Sew glass buttons to yoke and cuffs.



CARD 10



2

LONG LINE TOP

SIZES:-

32/34 (36/38) in. bust
81/86 (91/97) cms. bust

MATERIALS:-

1 Cone Shimmer
1 ball cotton ribbon
Card 11 as shown

TENSION:-

50 sts. × 36 rs. = 10 cms.
Tension dial approx. 2
Steam pressed

FOR ABBREVIATIONS:- SEE PAGE 9.

KNIT FOUR PANELS

Insert card to K. row 1 and leave locked.

C. on in WY, 124 (140) sts.

K. few rs. Carr. at right.

RC 000, MY, T2, K. 1 r. T1, K. 1 r.

Set mach. to Tuck.

MT -1, K. 6 rs.

Set mach. for SS.

K. 2 rs. Turn up hem.
MT +2, K. 2 rs.
RC 000, MT, K. 200 rs.
Mark both edges.
Cont. to K. until RC 280 rs.
Rel. work on WY.

Bring forward 31 (35) ns.
With right side facing, pick up sts.
placing 4 sts. on each n.
RC 000, MT, LOCK PAT'T. ROW 1.
Set mach. to weave.
Use Cotton ribbon to weave
DO NOT UNLOCK CARD.
K. 30 rs.
C. off.
K. 3 more pieces.

WAIST CORDS

(Knit three)

C. on 10 sts. by hand.

RC 000 MT, K. 500 rs.

C. off. Make tassels.

TO MAKE UP

Press all SS pieces.
Press weaving section to face hem.
Join shoulder seams.
Sew seams from hem to markers, to
form side and front seams.
Work 2 rs. double crochet around
armholes and open neck.
Press with steam iron.



CARD 11



3

BATWING SWEATER

SIZES:-

32/36 (38/42) in. bust
81/91 (97/107) cms. bust

MATERIALS:-

1 Cone Charisma Cols. A & B.

TENSION:-

32 sts. x 40 rs. = 10 cms.
Tension dial approx. 7

FOR ABBREVIATIONS:- SEE PAGE 9.

BACK

Counting from cent. 0 to right
C. on in WY, 50 (55) sts.
K. few rs. Carr. at left.
K. in nylon cord.
RC 000, Col. A, MT, K. 2 rs.
Inc. 1 st. at left next & foll. alt. rs. 70
times in all. until 120 (125) sts.
RC 142. K. 24 (32) rs.
MARK LEFT EDGE
Cont. to K. until RC 214 (238) **

SHAPE NECK

Dec. 1 st. at right next 8 rs.
K. 32 rs. Col. B K. 32 rs.
Inc. 1 st. at right next 8 rs.
Cont. to K. in Col. B ***
until RC 342 (382)

MARK LEFT EDGE

Cont. to K. until RC 366 (414)
Dec. 1 st. at left next & foll. alt. rs. 70
times in all until 50 (55) sts. rem.
RC 506 (554) K. 2 rs.
Rel. work on WY.

FRONT

Starting with Col. B.
K. as for back to **.

SHAPE NECK

Dec. 1 st. at right next 16 rs.
K. 24 rs. Col. A K. 24 rs.
Inc. 1 st. at right next 16 rs.

RC 294 (318). Cont. in Col. A.
K. as for back from ***.

WELTS

(Knit two)
Using Col. A,
C. on in 1 x 1 rib 126 (136) sts.
RC 000, T1/1, K. 40 rs.
Trans. sts. to M/bed.
With wrong side facing pick up sts.
between markers from front or back
waist.
T6, K. 1 r. T10, K. 1 r.
C. off with latch tool.

CUFFS

(Knit two)
Using Col. A,
C. on in 1 x 1 rib 61 (65) sts.
RC 000, T1/1, K. 40 rs.
Trans. sts. to M/bed.
With wrong side facing pick up sts.
evenly around sleeve edge.
T6, K. 1 r. T10, K. 1 r.
C. off with latch tool.

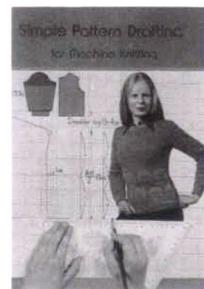
NECKBAND

Using Col. A,
C. on in 1 x 1 rib 149 sts.
RC 000, T2/2, K. 10 rs.
T1/1, K. 6 rs. T10/8, K. 1 r.
T2/2, K. 6 rs. T3/3, K. 10 rs.
T5/5, K. 1 r.
Trans. sts to M/bed.
With wrong side facing pick up sts.
evenly around neck.
T6, K. 1 r. T10, K. 1 r.
C. off with latch tool.

TO MAKE UP

Sew inside & outside sleeve seams.
Fold neckband to inside & slip st. into
position.
Press with warm iron.

SIMPLE PATTERN DRAFTING FOR MACHINE KNITTERS



**A must for all owners of
Knit Radars – Knit Leaders
Knit Tracers**

FEATURES OF THIS BOOK

The easy step by step diagrams allow you to
create knitting patterns to individual measure-
ments. The patterns can be created in half or full
size depending on your attachment.

**Available at your local stockist or
B.S.K. Ltd, 58 Bromham Rd., BEDFORD
Phone: (0234) 52323**



4

FOUR COLOUR SWEATER

SIZES:-

32/36 (38/42) in. bust
81/91 (97/107) cms. bust

MATERIALS:-

1 Cone Charisma Cols. A, B, C & D

TENSION:-

32 sts. x 40 rs. = 10 cms.
Tension dial approx. 7

FOR ABBREVIATIONS:- SEE PAGE 9

BACK

Counting from cent. 0 to right
C. on in WY, 50 (55) sts.
K. few rs. Carr. at left.

*Work in stripes as folls.
Col. A K. 40 rs. Col. C. K. 2 rs.
Col. B K. 40 rs. Col. C. K. 2 rs.*

AT SAME TIME

RC 000, MT, Col. A, K. 26 rs.

Inc. 1 st. at right next & foll. alt. rs. 70
times until 120 (125) sts.
Col. C, K. 2 rs.
Col. A, K. 1 r. C. on 10 sts. beg. next r.
RC 168, 130 (135) sts.
Col. A, K. 38 rs. Col. C, K. 2 rs.
Col. D, K. 28 (52) rs.
RC 238 (262) **.

SHAPE NECK

Dec. 1 st. at right next 10 rs.
K. 64 rs.
Inc. 1 st. at right next 10 rs.

*** Col. D, K. 28 (52) rs.
Col. C, K. 2 rs. Col. A, K. 39 rs.
C. off 10 sts. beg. next r.
Col. A, K. 2 rs.

Cont. to work in stripe patt.
& AT SAME TIME
Dec. 1 st. at left next & foll. alt. rs. 70
times in all, until 50 (55) sts. rem.
Col. A, K. 26 rs.
RC 558 (606).
Rel. work on WY.

FRONT

K. as for back to **

SHAPE NECK

Dec. 1 st. right next 18 rs.
K. 48 rs.
Inc. 1 st. at right next 18 rs.
K. as for back from ***.

WELTS

Using Col. D.
C. on in 1 x 1 rib 146 (156) sts.
RC 000, T1/1, K. 50 rs.
Trans. sts. to M/bed.
With wrong side facing pick up sts.
evenly around front or back waist.
MT, K. 1 r. T10, K. 1 r.
C. off with latch tool.

CUFFS

Using Col. D.
C. on in 1 x 1 rib 69 (73) sts.
RC 000, T1/1, K. 50 rs.
Trans. sts. to M/bed.
With wrong side facing pick up sts.
evenly around sleeve edge.
MT, K. 1 r. T10, K. 1 r.
C. off with latch tool.

NECKBAND

Using Col. D.
C. on in 1 x 1 rib 189 sts.
RC 000, T2/2, K. 12 rs.
Trans. sts. to M/bed.
With wrong side facing pick up sts.
evenly around neck.
MT, K. 1 r. T10, K. 1 r.
C. off with latch tool.

TO MAKE UP

Join inside & outside sleeve seams.
Join neckband.
Press with warm iron.

OTHER PUBLICATIONS AVAILABLE IN THIS SERIES



BROTHER LACY KNITS
BROTHER CHUNKY KNITS
ALSO
BSK BABY KNITS
BK CLASSIC KNITWEAR
BK RIBBED KNITWEAR

AVAILABLE FROM YOUR
LOCAL STOCKIST
OR

BSK Ltd., 58 Bromham Rd., BEDFORD
Phone: (0234) 52323



5

CHUNKY BUTTON UP

SIZES:-

32 (34 36 38) in. bust
81 (86 91 97) cms. bust

MATERIALS:-

1 Cone Cotton Floss Col. A.
1 Cone BK. 4 ply Acrylic Col. B.
used two ends throughout
4 buttons.

TENSION:-

16 sts. \times 32 rs. = 10 cms.
Tension dial approx. 3

NOTE:-

Purl side is used as right side.

FOR ABBREVIATIONS:- SEE PAGE 9.

BACK

Using Col. B
C. on in 1 \times 1 rib 73 (79 85 91) sts.
RC 000, T0/0 K. 30 rs.
Trans. sts. to M/bed.
Inc. 1 st. WORKING IN STRIPES
THROUGHOUT

(Col. A, K. 10 rs. Col. B, K. 2 rs.)
RC 000, MT, K. until
RC reads 100 rs.

SHAPE ARMHOLES

C. off 7 sts. beg. next 2 rs.
Cont. to K, until RC 159.
Cont. in Col. B only. K. 9 rs.

SHAPE SHOULDERS

C. off 14 sts. beg. next 2 rs.
32 (38 44 50) sts. rem. RC 170.
Change to WY, K. few rs.
Rel. work from mach.

FRONT

K. as for back until RC 100.

DIVIDE WORK

Push 34 (37 40 43) sts. at left into HP.
Work on right side only.
C. off 7 sts. beg. next r.
C. off 6 sts. beg. next r.
Cont. to K. until RC 152.
Always taking yarn round last n. in HP.

SHAPE NECK

At oppos. end to carr.
Push 5 (6 7 8) sts. into HP, K. 2 rs.
Push 4 (6 8 10) sts. into HP, K. 2 rs.
Push 1 st. at neck into HP, next 4 rs.
K. until RC 159.
Cont. in Col. B only, K. 9 rs.
C. off 14 sts. beg. next r.
K. 1 r. across all ns. in HP.
Change to WY, K. few rs.
Rel. work from mach.

Work left side to match rev. all
shapings, OMITTING CASTING OFF 6
sts. ON ROW 102.

SLEEVES

Using Col. B.
C. on in 1 \times 1 rib 49 (51 53 55) sts.
RC 000, T0/0 K. 10 rs.
Trans. sts. to M/bed. Inc. 1 st.
MT, Col. A, K. 3 rs.
Inc. 1 st. both ends next & foll.
4th rs. until 70 (72 74 76) sts.
K. until RC 62.
Cont. in Col. B only, K. 10 rs.
C. off loosely.

Join right shoulder.

NECKBAND

FIRST SIDE

Bring forward 51 (60 69 78) ns.
With knit side facing pick up sts. held
on WY at front, 6 sts. at side, 32 (38 44
50) sts. from back.
Using Col. B, MT, K. 2 rs.
C. off loosely.

SECOND SIDE

Bring forward 19 (22 25 28) sts.
With knit side facing pick up 6 sts. from
side, and sts held on WY at front.
Using Col. B, MT, K. 2 rs.
C. off loosely.

BUTTON BAND

Bring forward 28 ns.
With knit side facing pick up 28 sts.
along left front.
Using Col. B, MT, K. 9 rs.
T10, K. 1 r.
C. off with latch tool.

BUTTON HOLE BAND

K. as for button band working 4
buttonholes evenly along 5th row.

TO MAKE UP

Join shoulder seam.
Set in sleeves, sewing last 10 rs. of Col.
B onto C. off sts. at armhole. Join side &
sleeve seams, sew bands to C. off sts.
at cent. front. Sew on buttons.
Press with warm iron.



6

PARTY POODLE SUIT

SIZES:-

32/34 (36/38 40/42) in. bust
81/86 (91/97 102/107) cms. bust

MATERIALS:-

1 Cone Party Poodle Col A.
Small amount Cols B, C.

TENSION:-

32 sts. x 56 rs. = 10 cms.
Tension dial approx. 3

NOTE:-

Purl side is used as right side of garment.

FOR ABBREVIATIONS:- SEE PAGE 9.

BACK

Countin from cent 0 to right.
C. on in WY, 50 (55 60) sts.
K. few rs., carr. at left.
K. in nylon cord.
RC 000, Col. A, K. 2 rs.
Inc. 1 st. at left next & foll. alt. rs. 70

times in all.
RC 142. 120 (125 130) sts.
K. 21 rs. MARK LEFT EDGE. beg. next
r.
K. 54 (64 74) rs. RC 218 (228 238).

Col. C, K. 2 rs. C. B, K. 18 rs.
Col. C, K. 2 rs. RC 240 (250 260). *

SHAPE NECK

Col. A, Dec. 1 st. at right next 10 rs.
K. 18 rs. Col. C, K. 2 rs. Col. B, K. 40 rs.
Col. C, K. 2 rs. Col. A, K. 18 rs.
Inc. 1 st. at right next 10 rs.
RC 340 (350 360).
Col. C, K. 2 rs. Col. B, K. 18 rs.
Col. C, K. 2 rs.
Col. A, K. 21 rs, MARK LEFT EDGE
beg. next r.
RC 416 (436 456).
Dec. 1 st. at left next & foll. alt. rs. 70
times in all until 50 (55 60) sts. rem. K. 2
rs.
Rel. work on WY.

FRONT

K. as for back to *.

SHAPE NECK

Col. A, Dec. 1 st. at right next 16 rs.
K. 12 rs. Col. C, K. 2 rs. Col. B, K. 40 rs.
Col. C, K. 2 rs. Col. A, K. 12 rs.
Inc. 1 st. at right next 16 rs.
RC 340 (350 360).
Col. C, K. 2 rs. Col. B, K. 18 rs. Col. C,
K. 2 rs.
Col. A, K. 21 rs. MARK LEFT EDGE
beg. next r.
RC 416 (436 456).
Dec. 1 st. at left next & foll. alt. rs. 70
times in all until 50 (55 60) sts rem.
Rel. work on WY.

WELTS

(Knit two)
Using Col. A. Two ends
C. on in 1 x 1 rib 133 (143 153) sts.
RC 000, T1/1, K. 40 rs.
Trans. sts. to M/bed.
With knit side facing pick up sts.
between markers from front or back
waist.
T2. K. 1 r., T10, K. 1 r.
C. off with latch tool.

CUFFS

(Knit two)
Using Col. A. Two ends
C. on in 1 x 1 rib 59 (61 63) sts.
RC 000, T1/1, K. 40 rs.
Trans. sts. to M/bed.
Pick up sts. evenly around sleeve
edge. MT, K. 1 r. T10, K. 1 r.
C. off with latch tool.

NECKBAND

Bring forward 137 ns.
With knit side facing pick up 71 sts
from front neck & 66 from back neck.
RC 000, Col. A MT, K. 8 rs.
T10, K. 1 r. MT, K. 8 rs.
Rel. work on WY.

TO MAKE UP

Join inside & outside sleeve seams.
Fold neckband to inside & back st.
open sts into position.
Press with warm iron.

SKIRT

C. on in WY 170 sts.
K. few rs. carr. at left.
K. in nylon cord.
Bring all ns. into HP.
MY. C. on by hand over all ns. K. 2 rs.
RC 000 ** Always taking yarn round
last ns. in HP. Push 15 sts. at left into HP
next & foll. alt. rs. 4 times in all.
Push 10 sts. into HP next & foll. alt. rs.
10 times in all. (10 sts. rem. in WP)
Push 10 sts. at right back into WP next
& foll. alt. rs. 10 times in all. Push 15 sts.

cont on page 16 col 3



7 SHORT SLEEVE CHUNKY

SIZES:-

32 (34 36 38 40) in. bust
81 (86 91 97 102) cms. bust

MATERIALS:-

1 Cone Cotton Floss Col. A.
1 Cone BK 4 ply Acrylic used two ends.
Col. B.

TENSION:-

16 sts. \times 32 rs. = 10 cms.
Tension dial approx. 3

NOTE:-

Purl side is used as the right side.

FOR ABBREVIATIONS:- SEE PAGE 9.

BACK

Using two ends of Col. B.
C. on in 1 \times 1 rib 71 (77 83 89 97) sts.
RC 000, T0/0, K. 22 rs.
Trans. sts. to M/bed.
Inc. 1 st. Col. A.
MT, K. until RC 108 rs.

SHAPE ARMHOLE

RC 000, C. off 4 sts. beg. next 2 rs.

Dec. 1 st. both ends next 2 rs.
Dec. 1 st. both ends next & foll. alt. rs.
until 58 (64 70 76 82) sts. rem.
Cont. to K. until RC 58 (62 66 70 72) rs.

SHAPE SHOULDER

C. off 4 sts. beg. next 4 rs.
C. off 5 sts. beg. next 2 rs.
32 (38 44 50 56) sts. rem.
Change to WY, K. few rs.
Rel. work from mach.

FRONT

K. as for back until RC reads 50 (54 58 62 64) rs. After armhole shaping.

SHAPE NECK

Push all ns. left of cent. into HP.
Work on right side only.

Always taking yarn round last n. in HP.
At oppos. end to carr.
Push 6 (7 9 10 12) sts. into HP, K. 2 rs.
Push 6 (8 9 11 12) sts. into HP, K. 2 rs.
Push 1 st. into HP, next 4 rs.

SHAPE SHOULDER

C. off 4 sts. beg. next & foll. alt. r.
K. 1 r. C. off 5 sts. beg. next r.

Work left side to match, rev. all shapings.

Pick up 4 sts. both ends.
MT, K. across all ns.
Change to WY, K. few rs.
Rel. work from mach.

SLEEVES

Using Col. B two ends,
C. on by hand 50 (52 54 56 58) sts.
MT-1, K. 2 rs.
Change to Col. A.
RC 000, MT, K. 6 rs.
Inc. 1 st. both ends next & foll.
4th r. until 70 (72 74 76 78) sts.
Cont. to K until RC reads 66 rs.

SHAPE TOP

Always taking yarn round last n. in HP,
At oppos. end to carr. push 3 sts. into
HP. next 20 rs. 10 (12 14 16 18) sts. rem.
in WP.
BREAK YARN.
Change to Col. B, two ends.
K. 4 rs. across all ns.
With K. side facing out pick up sts.
evenly around armhole edge.
MT K. 1 r.
C. off loosely.

NECKBAND

Bring forward 72 (84 96 108 120) ns.
Pick up 40 (46 52 58 64) sts. across
front, 32 (38 44 50 56) sts. across back.
Using Col. B, two ends, MT, K. 2 rs.
T10, K. 1 r.
C. off with latch tool.

TO MAKE UP

Sew side & sleeve seams.
Press with cool iron.

cont from page 15

into WP next & foll. alt. rs. 4 times in all.
K. 30 rs.
RC 86 rs. Rep. from * to * 13 (15 17)
times in all.
C. off loosely.

WAISTBAND

(Knit two)
Bring forward 120 (130 150) ns.
With K. side facing pick up sts. from
front or back skirt.
RC 000, MY, MT, K. 16 rs.
T10, K. 1 r. MT-1, K. 16 rs.
T10, K. 1 r. C. off with latch tool.

TO MAKE UP

Join back seam.
Fold waistband to inside & slip st. into
position.
Thread elastic through waist.
Press with cool iron.



8

TEENAGE SUIT

SIZES:-

26/28 (30/32) in. chest
66/71 (76/81) cms. chest

MATERIALS:-

2 Cones Charisma Col. A.
Small amount Cols. B, C.
Elastic to fit waist.
Ribbon:- ½ metre Col. A.
1 metre Col. C., 2½ metre Col. B.
Card 12 as shown on page 18

TENSION:-

32 sts. × 40 rs. = 10 cms.
Tension dial approx. 6

NOTE:-

Purl side is used as right side of garment on skirt.

FOR ABBREVIATIONS:- SEE PAGE 9.

FRONT

(All in one piece)
Insert card & lock to K. row 1.

At left of mach C. on in WY, 25 (31) sts.
K. few rs., Carr. at right.
RC 000, Col. A, MT, K. 2 rs.
Inc. 1 st. at right next & foll. alt. rs. until
102 (108) sts. RC 156.
Carr. at right,
C. on 45 (49) sts. beg. next r.
Cont. to K. until RC 172 (182) rs.

SHAPE NECK

AT SAME TIME, Dec. 1 st. at neck next
& foll. alt. rs. 24 times and
Rel. card & work in lace. Col. B, K. 8 rs.
Col. C, K. 40 rs. Col. B, K. 8 rs.
Col. A, K. 40 rs. Col. B, K. 8 rs.
AT SAME TIME Inc. 1 st. at neck next
& foll. alt. rs. 24 times, and Col. C, K. 40
rs. Col. A, K. 8 rs. RC 324 (334).
K. 16 (26) rs.
Carr. at right.
C. off 45 (49) sts. beg. next r. K. 1 r.
Dec. 1 st. at right next & foll. alt. rs. until
25 (31) sts. rem.
K. 2 rs. Rel. work on WY.

BACK

K. as for front working col. changes in
SS only, and omitting neck shaping.

NECKBAND

Join left shoulder.

Bring forward 153 ns.
With wrong side facing pick up sts.
evenly around neck.
RC 000, MT, K. 2 rs., MT-1, K. 2 rs.
MT-1, K. 2 rs. MT-3, K. 2 rs.
T9, K. 1 r.
Trans. ev. other st. onto adjacent ns.
leaving empty ns. in WP.
MT-3, K. 2 rs. MT-2, K. 2 rs.
MT-1, K. 2 rs. MT K. 2 rs.
Rel. work on WY.

CUFFS

Join part of upper sleeve seam.

Bring forward 49 (61) ns.
With wrong side facing pick up sts.
evenly around sleeve.
RC 000, MT-1, K. 26 rs. T10, K. 1 r.
MT-1, K. 26 rs.
Rel. work on WY.

HEMS

Bring forward 110 (120) ns.
With wrong side facing pick up sts.
evenly along bottom of sweater.
RC 000, MT, K. 10 rs., T10, K. 1 r.
MT, K. 10 rs. Rel. work on WY.

TO MAKE UP

Join sleeve & side seams.
Fold neck, sleeve, & hems to inside &
slip st. open sts. to garment.
Thread ribbon through eyelets on lace
patt.
Press with warm iron.

SKIRT

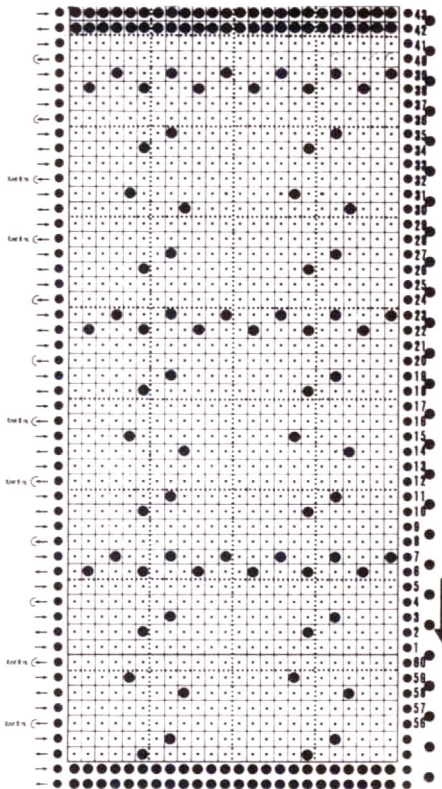
C. on by hand 160 sts.,
K. few rs, carr. at right.
Bring all ns. to HP.
MY. C. on by hand over all ns.
RC 000, MT, * K. 26 rs.
Always taking yarn round last n. in HP,
at oppos. end to carr. push 10 sts. into
HP next & ev. foll. alt. rs. 15 times in all.
(10 sts. rem. in WP).
Starting from right push 10 sts. back
into WP next & foll. alt. rs. until all sts.
in WP. *
Rep from * to * 11 (12) times in all.
C. off loosely.

WAIST BAND

(Knit two)
Bring forward 100 (106) ns.
With K. side facing pick up sts. evenly
from front or back waist.
MT, K. 1 r., MT-1, K. 12 rs.
T10, K. 1 r. MT-1, K. 12 rs.
T10, K. 1 r.
C. off with latch tool.

TO MAKE UP

Join back seam, fold waistband to inside & slip st. into position.
Thread elastic through waist.
Press with warm iron.



CARD 12

On rows 12, 16, 28, 32, 56, 60 knit 8 rows before using lace carriage



9

DRESS & JACKET

SIZES:-

32/34 (36/38) in. bust
81/86 (91/97) cms. bust

MATERIALS:-

2 Cones Charade
4 buttons
Elastic to fit over bust

TENSION:-

34 sts. × 40 rs. = 10 cms.
Tension dial approx. 6.

FOR ABBREVIATIONS:- SEE PAGE 9.

DRESS

BACK

C. on in WY 1 × 1 rib 173 (181) sts.
* K. few rs. Carr. at right.
T9, K. 1 r. T2, K. 5 rs.
Bring forward empty ns.
T4, K. 10 rs. Turn up hem.

T9, K. 1 r. T6, K. 1 r. *
RC 000, MT, K. 320 rs.
T4, K. 10 rs. T8, K. 1 r.
Trans. ev. 2nd st. onto adjacent n.
leaving empty ns. in WP.
T3, K. 10 rs. T8, K. 1 r.
Rel. work on WY.

FRONT

(First side)
C. on in WY, 1 × 1 rib 87 (91) sts.
Rep. as for back from * to *
RC 000, MT, K. 150 rs.
Rel. work on WY.

(Second side)

Bring forward 8 (10) sts. left cent. 0
79 (81) sts. right cent. 0. 87 (91) sts.
K. as for first side.
Bring forward 79 (81) sts. left cent. 0.
Pick up sts. from first side placing 1 st.
on each n. overlap the cent. 8 (10) sts.
Cont. to K until RC 320 rs.

T4, K. 10 rs. T8, K. 1 r.
Trans. ev. 2nd st. onto adjacent ns.
leaving empty ns. in WP.
T3, K. 10 rs. T8, K. 1 r.
Rel. work on WY.

TO MAKE UP

Join side seams, fold top hem to inside
and slip st. open sts. Thread elastic
through top.

JACKET

BACK

C. on in WY, 1 × 1 rib 153 (161) sts.
* K few rs. Carr. at right T9, K. 1 r. T2,
K. 5 rs.
Bring forward empty ns.
T4, K. 10 rs. Turn up hem.
T9, K. 1 r. T6, K. 1 r. *
RC 000, MT, K. 130 rs.

Mark both ends next r.
 Cont. to K. until RC 220.
 C. off 42 sts. beg. next 2 rs.
 Rel. work on WY.

RIGHT FRONT

C. on WY, 1 × 1 rib 91 (95) sts
 K. as for back from * to *.
 RC 000, MT, K. 2 rs. WORK
 BUTTONHOLES.
 *Counting from left with spare yarn C.
 off 7th to 12th sts. miss 28 sts.
 C. off next 6 sts. K. 1 r.
 C. on by hand over button holes, K. 1
 r.*
 Cont. to K. until RC 26.
 Rep. buttonhole rows.
 K. 2 rs. RC 30.
 Dec. 1 st. FF at left next & ev. foll. 3rd r.
 until RC 130.
MARK RIGHT EDGE
 Cont. to dec. as before until 42 sts. rem.
 Cont. to K. until RC 220.
 C. off rem. sts.

LEFT FRONT

K. as for right front, rev. shapings.

Join shoulder seams.

SLEEVES

Bring forward 129 ns.
 With wrong side facing pick up sts.
 from armhole between markers.
 RC 000, MT, K. 140 rs.
 Rel. work on WY.

CUFFS

Bring forward 65 ns.
 With wrong side facing, pick up sts.
 from sleeve placing 2 sts. on each n.
 T5, K. 30 rs. T8, K. 1 r. T5, K. 30 rs.
 Rel. work on WY.

TO MAKE UP

Join side & sleeve seams.
 Fold cuffs to inside and slip st. down
 open sts.
 Crochet 4 rs. double crochet along
 fronts and neck.
 Finish button holes.
 Sew on buttons.
 Press with steam iron.



10

LONG SLEEVE CHUNKY

SIZES:-

32 (34 36 38) in. bust
 81 (86 91 97) cms. bust

MATERIALS:-

1 Cone Cotton Floss Col. A.
 1 Cone BK 4 ply, used two ends, Col. B.

TENSION:-

16 sts. × 32 rs. = 10 cms.
 Tension dial approx. 3

NOTE:-

Purl side is used as right side.

FOR ABBREVIATIONS:- SEE PAGE 9

BACK

Using Col. B. Set half pitch lever to 'H'
 C. on in 2 × 2 rib 57 (61 65 69) sts.
 RC 000 T0/0, K. 24 rs.
 Change to WY, K. few rs.

Rel. work from mach.
 On M/bed bring forward 74 (80 86 92)
 ns.
 Replace work putting 1 st. on each n.
 RC 000 Col. A, MT, K. 76 (76 80 80) rs.

SHAPE ARMHOLE

RC 000, C. off 3 sts. beg. next 2 rs.
 Dec. 1 st. both ends next & foll. alt. rs. 3
 times in all. **
 Cont. to K. until RC 64 (66 68 70) rs.

SHAPE SHOULDER

C. off 4 (5 5 6) sts. beg. next 4 rs.
 C. off 5 (5 6 7) sts. beg. next 2 rs.
 Change to WY, K. few rs.
 Rel. work from mach.

FRONT

K. as for back to **

NEW

"COTTON FLOSS" CHUNKY YARN

63% cotton 22% acrylic 15% polyester

500g Cones
 Available in
5 SUPER SHADES

Cont. to K. until RC 50 (52 54 56) rs.

SHAPE NECK

Push all ns. left cent. into HP

** Always taking yarn round last ns. in HP.

At oppos. end to carr.

Push 5 sts. into HP, K. 2 rs.

* Push 3 sts. into HP, K. 2 rs. *

Rep. * to * 2 times.

Push 1 st. into HP next 8 rs.

RC 64 (66 68 70). rs.

SHAPE SHOULDER

C. off 4 (5 5 6) sts. beg. next & foll. alt. r.
K. 1 r.

C. off 5 (5 6 7) sts. beg. next r.

Pick up 3 sts. at neck edge.

MT, K. across all ns. **

Push all ns. right of cent. into HP.

Rep. for left side from

SHAPE NECK ** to **, rev. all
shaping.

Change to WY, K few rs.

Rel. work on WY.

SLEEVES

Using Col. B.

C. on in 2 x 2 rib 36 (36 38 40) sts.

RC 000, T0/0, K. 24 rs.

Trans. sts. to M/bed.

RC 000, Col. A, MT, Inc. 1 st. both ends
next & foll. 4th rs. until 70 (72 74 76) sts.

Cont. to K until RC 110 rs.

SHAPE TOP

Dec. 1 st. both ends next 13 rs. K. 1 r.

C. off 3 sts. beg. next 2 rs.

C. off 6 sts. beg. next 2 rs.

C. off rem. sts.

Join right shoulder seam.

NECKBAND

Using Col. B.

C. on in 2 x 2 rib 74 sts.

RC 000, T0/0, K. 10 rs. Trans. sts. to
M/bed.

With knit side facing, pick up sts.
around neck held on WY.

MT, K. 1 r. T10, K. 1 r.

C. off with latch tool.

TO MAKE UP

Join shoulder seam, set in sleeves.

Sew side & sleeve seams.

Press with warm iron.

B.K. SHIMMER



AVAILABLE
IN
8 SHADES
ON
350g CONES



11

V NECK BACK SUIT

SIZES:-

32/34 (36/38) in. bust

81/86 (91/97) cms. bust

MATERIALS:-

2 Cones Charade

Elastic to fit waist

TENSION:-

33 sts. x 39 rs. = 10 cms.

Tension dial approx. 6

FOR ABBREVIATIONS:- SEE PAGE 9.

SKIRT

CENTRE FRILL

C. on in WY, 1 x 1 rib 145 (151) sts.

* K. few rs. Carr. at right.

RC 000, T9, K. 1 r. T2, K. 5 rs.

Bring forward empty ns.

T4, K. 10 rs. Turn up hem.

T9, K. 1 r. T6, K. 1 r. *

RC 000, MT, K. 50 rs.

Rel. work on WY.

LEFT SIDE

C. on in WY, 1 x 1 rib 51 (53) sts.

Rep. for cent. frill from * to *

RC 000, MT, K. 8 rs.

Dec. 1 st. at left next & foll. 8th rs. until
RC 50.

Rel. work on WY.

RIGHT SIDE

Work as for left frill to *

RC 000, MT, K. 8 rs.

Dec. 1 st. at right next & foll. 8ths rs.
until RC 50.

Rel. work on WY.

Bring forward 136 (142) ns.
 With wrong side facing
 Pick up sts. from 3 sections taking care
 to place left side to left side etc.
 From cent. panel place 3 sts. onto each
 n.
 RC 000, MT, Cont. to dec. 1 st. both
 ends ev. 8th r. as before until 76 (82)
 sts. rem.
 Cont. to K. until RC 300.
 T4, K. 10 rs. T8, K. 1 r. T4, K. 10 rs.
 Cast off.

Knit 2 more panels.

TO MAKE UP

Join side seams, sew waistband to
 inside – thread elastic through waist.
 Press with steam iron.

TOP

BACK

C. on in 1 × 1 rib 133 (141) sts.
 RC 000, T1/1, K. 30 rs.
 Trans. sts. to M/bed.
 RC 000, MT, K. until RC 60.

DIVIDE WORK FOR V NECK

C. off cent. st.
 Place all sts. at left into HP.
 Work on right side only.

Dec. 1 st. at neck edge next & foll. 4th
 rs. until RC 120.
 Mark armhole edge.
 Cont. to dec. until 40 sts. rem.
 Cont. to K. until RC 200.
 C. off.

K. left side to match.

FRONT

C. on in 1 × 1 rib 133 (141) sts.
 RC 000 T1/1, K. 30 rs.
 Trans. sts. to M/bed.
 RC 000, K. until RC 120 rs.
 Mark both edges.
 Cont. to K. until RC 130.

Divide for neck.

Place all sts. at left into HP.
 C. off cent. st.
 Work on right side only.
 Dec. 1 st. at neck edge on next & foll.
 alt. rs. until 40 sts. rem.
 Count to K. until RC 200.
 C. off.

Join shoulder seams.

SLEEVES

Bring forward 125 sts.
 With wrong side facing pick up sts. at
 armhole edge between markers.
 RC 000, MT, K. 20 rs.
 Dec. 1 st. both ends next & foll. 10th r.
 until 99 sts.
 Cont. to K. until RC 170 rs.

Trans. sts. to 1 × 1 rib.
 T1/1, K. 30 rs.
 C. off with latch tool.

NECKBAND

Bring forward 140 ns.
 With wrong side facing pick up sts.
 between front & back V neck.
 T5, K. 2 rs. T4, K. 2 rs.
 T3, K. 2 rs. T2, K. 2 rs. T8, K. 1 r.
 T2, K. 2 rs. T3, K. 2 rs. T4, K. 2 rs.
 T5, K. 2 rs.
 Rel. work on WY.

TO MAKE UP

Fold neckband to inside and slip st.
 open sts. overlap bands at cent. front
 and back.
 Join side and sleeve seams.
 Gather shoulder seams.
 Press with steam iron.

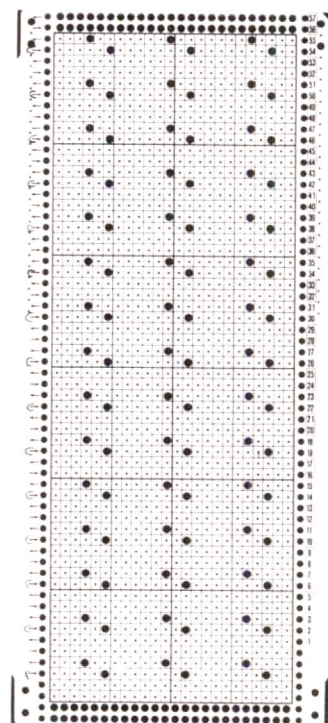


cont from page 22

TO MAKE UP

Sew side seams & sleeve seams.
 Stitch on front band, sew on buttons.
 Thread ribbon through eyelet holes.
 (as photograph) & secure at back of
 work.
 Press with warm iron.

CARD 13



POWER-KNIT FOR DOMESTIC KNITTING MACHINES

POWER KNIT MOTOR

Built for continuous service – can be run 24 hours
 a day. Suitable for JONES + BROTHER –
 KNITMASTER – TOYOTA machines, single and
 double bed – can be fitted to any sturdy table

FOOT PEDAL OPERATION

giving perfect control – or switch to Automatic to
 obtain constant running in the absence of the
 operator

AUTOMATIC CARRIAGE RELEASE

Sensitive device which disconnects the drive in
 the event of jamming of the carriage – avoiding
 needle breakage and other damage

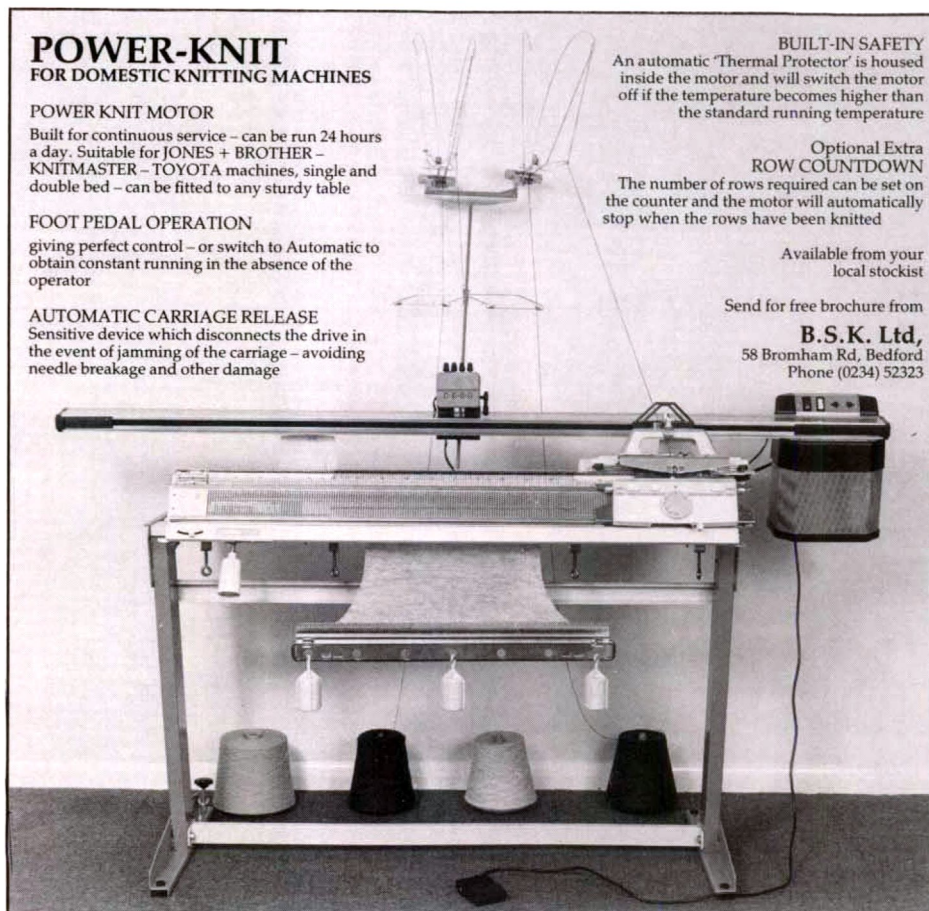
BUILT-IN SAFETY
 An automatic 'Thermal Protector' is housed
 inside the motor and will switch the motor
 off if the temperature becomes higher than
 the standard running temperature

**Optional Extra
ROW COUNTDOWN**
 The number of rows required can be set on
 the counter and the motor will automatically
 stop when the rows have been knitted

Available from your
 local stockist

Send for free brochure from

B.S.K. Ltd,
 58 Bromham Rd, Bedford
 Phone (0234) 52323





12

RIBBONED CARDIGAN

SIZES:-

32 (34 36 38) in. bust
81 (86 91 97) cms. bust

MATERIALS:-

1 Cone BK. Charisma
3 metres ribbon in pink, lemon & blue
7 buttons
Card 13 as shown on page 21

TENSION:-

30 sts. \times 38 rs. = 10 cms.
Tension dial approx. 7

FOR ABBREVIATIONS:- SEE PAGE 9.

BACK

C. on in 1 \times 1 rib 129 (135 143 149) sts.
RC 000, T2/2, K. 26 rs.
Trans. sts. to M/bed.

2nd & 4th sizes only Inc. 1 st.
RC 000, MT, K. 126 rs.

SHAPE ARMHOLE

C. off 10 sts. beg. next 2 rs.
Cont. to K. until RC 226 rs.
C. off.

RIGHT FRONT

Insert card & lock to K. row 1.
C. on in 1 \times 1 rib 61 (65 69 73) sts.
36 (40 44 48) to left cent. & 25 sts. to
right cent.
RC 000, T2/2, K. 26 rs.
Trans. sts. to M/bed.

LACE MACHINES

RC 000, MT, set mach. for single motif
over cent. 24 sts. K. 4 rs.

Rel. card & work in lace.

NON-LACE MACHINES

RC 000, K. 4 rs.

* Left of cent. place sts. 6 & 8 onto n. 7.
Right of cent. place sts. 1 & 3 onto n. 2,
Right of cent. place sts. 9 & 11 onto n.
10,
K. 4 rs. * Rep. from * to *.

ALL MACHINES

Cont. in lace patt. until RC 120 rs.

SHAPE FRONT

Dec. 1 st. FF at neck next & foll. 4th rs.
RC 125.

SHAPE ARMHOLE

C. off 10 sts. beg. next r.
Dec. 1 st. at neck next & foll. 4th rs.
until 27 (31 35 39) sts. rem.
Cont. to K. until RC 226 rs.
C. off.

LEFT FRONT

Insert card & lock to K. row 1.
C. on in 1 \times 1 rib 61 (65 69 73) sts.
25 to the left cent. 36 (40 44 48) right of
cent.

Work as for left front, rev. shaping.

NON-LACE MACHINES

Work lace panel as folls:-

* Left of cent. place sts. 1 & 3 onto n. 2.
Left of cent. place sts. 9 & 11 onto n. 10,
Right of cent. place sts. 6 & 8 onto n. 7.
K. 4 rs. * Rep. from * to *.

SLEEVES

Bring forward 150 ns.
With wrong side facing pick up sts.
evenly between C. off sts. at armholes.
RC 000, MT, K. 16 rs.
Dec. 1 st. both ends next & foll. 15th rs.
until 134 sts. rem.
Cont. to K. until RC 130.
Rel. work on WY.

CUFFS

C. on in 1 \times 1 rib 61 sts.
RC 000, T2/2, K. 50 rs.
Trans. sts. to M/bed.
With wrong side facing, pick up sts.
from sleeve placing 2 sts. on each n.
MT, K. 1 r. T10, K. 1 r.
C. off with latch tool.

BUTTON BAND

C. on in 1 \times 1 rib 15 sts.
RC 000, T1/1, K. 2 rs.
Make buttonhole, * trans. cent. st. to
adjacent n. leaving empty n. in WP. K.
20 rs. *
Rep. from * to * until 7 buttonholes
have been worked.
Cont. to K. until RC 550 or to fit all
round front & neck.

cont on page 21 col 3



13

STRAIGHT SUIT

SIZES:-

34/36 in. bust
36/38 in. hip

MATERIALS:-

2 Cones BK Charade.
Elastic to fit waist & cuffs.

TENSION:-

36 sts. \times 46 rs. = 10 cms.
Tension dial approx. 5

FOR ABBREVIATIONS:- SEE PAGE 9.

SKIRT

(Knit two)

C. on in WY, 1×1 rib, 161 sts.

* K. few rs carr. at left.

RC 000, MY, T9, K. 1 r.

T1, K. 7 rs. Bring forward ns. in NWP.

T3, K. 12 rs. Turn up hem. T9, K. 1 r. *

RC 000, MT, K. 290 rs.

T9, K. 1 r. T3, K. 10 rs.

C. off loosely.

TO MAKE UP

Join side seams, fold waist to inside & slip st. into position. Thread elastic through waist.
Press.

SWEATER

BACK

C. on in WY, 1×1 rib 155 sts.

K. hem as for skirt from * to *. Inc 1 st.

RC 000, MT, always taking yarn round last ns. in HP, at oppos. end to carr.

Push 35 ns. into HP next & foll. r.
Push 7 ns. at oppos. end to carr. into WP next 10 rs. **
RC 000, MT, K. until RC 168 rs.
MARK BOTH EDGES.
Cont. to K. until RC 248.
C. off 50 sts. beg next 2 rs.
C. off rem. sts.

FRONT

K. as for back to **

RC 000, MT, K. until RC 162 rs.

SHAPE NECK

Divide work, place all sts. left cent 0 into HP, or K. back onto nylon cord.
Work on right side only.

Dec. 1 st. at neck next 6 rs.

MARK RIGHT EDGE.

Dec. 1 st. at neck next & ev. foll. alt. rs. until 50 sts. rem.

K. until RC 248.

C. off rem. sts.

Rep. for left side rev. all shaping.

SLEEVES

C. on in WY, 1×1 rib 131 sts.

K. hem as for skirt to *. Inc. 1 st.

RC000, MT, K. 150 rs.

C. off very loosely.

NECKBAND

Bring forward 66ns.

With wrong side facing pick up sts. from back neck. *

RC 000, MT-1, K. 14 rs. T10, K. 1 r.

MT-1, K. 14 rs. T10, K. 1 r.

C. off with latch tool.

FRONTBANDS

(Knit two)

Bring forward 66 ns.

With wrong side facing pick up sts. evenly along one front shaping.

RC 000, MT-1, K. 1 r.

Dec. 1 st. at cent. edge next & foll. alt. rs. 7 times in all.

T10, K. 1 r. MT-1, Inc. 1 st. at cent.

edge next & foll. alt. rs. 7 times in all, K. 1 r.

T10, K. 1 r.

T10, K. 1 r.

C. off with latch tool.

TO MAKE UP

Insert sleeves between markers, sew side & sleeve seams. Fold neckband to inside & slip st. into pos.
Thread elastic through cuffs.
Press with warm iron.



14 LACE COLLAR TOP

SIZES:-

32 (34 26) in. bust
81 (86 91) cms. bust

MATERIALS:-

1 (1 2) Cones Shimmer
3 metres of 5mm. Velvet ribbon.
Cards 14A & 14B as shown on page 28

TENSION:-

48 sts. \times 52 rs. = 10 cms.
Tension dial approx. 2 over SS
Steam pressed

FOR ABBREVIATIONS:- SEE PAGE 9.

RIGHT SIDES

(Knit two)
C. on in WY 1 \times 1 rib 107 (113 119) sts.
K. few rs. Carr. at right.

MT+4, K. 1 r. MT-1 K. 1 r.
Bring forward empty ns.
MT-1, K. 6 rs. Turn up hem.
MT+4, K. 1 r. MT, K. 1 r.
RC 000, MT, K. 120 rs.
Dec. 1 st. FF at left on next & foll. alt. rs.
AT SAME TIME Cont. to K. until RC
182.
Carr. at right.
C. off 5 (11 17) sts.
Still dec. as before cont until 20 sts. rem.
K. 2 rs.
C. off

LEFT SIDES

K. as for right, rev. shaping.

LACE INSERT

Insert card 14A and lock to K. row 1.

C. on by hand 5 sts.
MT, K. 2 rs. WEIGHT WORK
Set mach. to knit lace.
Working in lace
RC 000, Inc. 1 st. both ends next & ev.
foll. 4th rs. until 69 sts.
RC 126. Carr. at right.

DIVIDE WORK FOR NECK

K. cent. 21 sts. onto nylon cord in NWP.
K. all sts. left onto separate nylon cord
in NWP.
Cont. to Inc. at the right edge as
before.
AT SAME TIME, K. 2 rs.
* K. 2 sts. at neck edge onto nylon cord
in NWP, K. 2 rs. *
Rep. from * to * until all ns. are in
NWP.

Knit left side to match, rev. shaping.

Bring all ns. into WP.
Carr. at right.
MT, K. 1 r. T1 \bullet K. 3 rs.
T $\bullet \bullet$ K. 3 rs. T4, K. 1 r.
Trans. ev. other st. onto adjacent ns.
leaving empty ns. in WP. MT+4 K. 1 r.
T $\bullet \bullet$ K. 3 rs. T1 \bullet K. 3 rs.
T2, K. 1 r.
Turn up hem.
MT, K. 1 r. Rel. work on WY.

Join shoulder seams.

SLEEVES

Bring forward 121 ns.
Insert lace card 14A and lock to K. row 1.
With wrong side facing pick up sts.
along armhole edges between C. off sts.
Working in lace
RC 000, MT, K. 164 rs.
Rel. work on WY.

Bring forward 61 ns.
With wrong side facing, pick up sts.
from sleeve, placing 2 sts. on each n.
RC 000, MT, Working in SS.
K. 60 rs. T6, K. 1 r.
T1, K. 10 rs.
Rel. work on WY.

NECK FRILL

Insert lace card 14B & lock to K row 1
C. on in WY 60 sts.
K. few rs. Carr. at right.
MT, MY, K. 2 rs.
K. 58 sts. at left back onto nylon cord in
NWP.
WORKING IN LACE * K. 2 rs.
bring 2 sts. at right back into WP, *
Rep. from * to * until all sts. are back in
WP.
RC 000, Cont. to work in lace until RC
666.
* K. 2 sts. at left back onto nylon cord in
NWP, K. 2 rs. *
Rep. from * to * until 2 sts. rem. in WP.
Bring all sts. back into WP.
K. 2 rs. Rel. work on WY.

Knit second frill to match.

cont on page 28 col 3



15

FRILLED TOP SUIT

SIZES:-

32/34 (36/38) in. bust
81/86 (91/96) cms. bust

MATERIALS:-

2 Cones BK Charade
Elastic to fit waist & top of bust.
2 metres velvet ribbon.

TENSION:-

28 sts. x 42 rs. = 10 cms.
Tension dial approx. 5

NOTE:-

On skirt & part of top, purl side is right side of garment.

FOR ABBREVIATIONS:- SEE PAGE 9.

SKIRT

C. on by hand in WY 180 sts.

K. few rs. Carr. at right.
Bring all ns. into HP.
With MY, C. on by hand 180 sts.
RC 000, MT, K. 10 rs.
Always taking yarn round last ns. in HP, at oppos. end to carr.
* Push 10 sts. into HP, next & foll. alt. rs. until 10 sts. rem. in WP.
Push 10 sts. back into WP next & foll. alt. rs. until all ns. are in WP *
K. 20 rs. **
Rep. from * to ** 13 (17) times.
Rep. from * to *. K. 10 rs.
C. off very loosely.

WAISTBAND

(Knit two)
Bring forward 115 (133) ns.
With knit side facing pick up sts. from back or front waist.

RC 000, MT, K. 1 r. MT-1, K. 12 rs.
T10, K. 1 r. MT-1, K. 12 rs.
T10, K. 1 r. C. off with latch tool.

TO MAKE UP

Join back seam, fold waistband to inside & slip st. into position.
Turn up hem. Thread elastic through waist.
Press with warm iron.

TOP

BOTTOM FRILL

(Knit four)
* Using WY,
C. on in 1 x 1 rib 139 (153) sts.
K. few rs. Carr. at left.
K. in nylon cord.
RC 000, T9, K. 1 r.
T1, K. 7 rs. Bring forward ns. in NWP.
T3, K. 12 rs. Turn up hem. T9, K. 1 r.
Inc. 1 st. **
MT, K. 40 rs. Rel. work on WY.

TOP FRILL

(Knit four)
K. as for bottom frill to **
MT, K. 25 rs. Rel. work on WY.

BODICE

(Knit two)
Join two pieces of bottom frill & two pieces of top frill. Knit side is right side.

Bring forward 140 (154) ns. * -
With K. side facing pick up sts. from bottom frill held on WY. Placing 2 sts. on each n.
RC 000, MT, K. 2 rs.
Trans. ev. other st. onto adjacent ns. leaving empty ns. in WP.
Cont. to K. until RC 100.

TOP FRILL

With K. side facing pick up sts. from top frill placing 2 sts. on each n. T3, K. 10 rs. T9, K. 1 r. T3 K. 10 rs.
C. off very loosely.

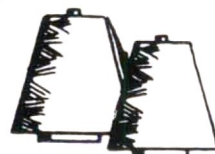
TO MAKE UP

Join side seams, fold neck edge to inside & slip st. into position. Thread elastic through top. Thread ribbon through waist.

B.K. PARTY POODLE

AVAILABLE IN
12 SHADES

ON
500g CONES





16 TUCK LACE TOP

SIZES:-

32 (34 36 38) in. bust
81 (86 91 96) cms. bust

MATERIALS:-

1 Cone Charisma
Card No. 213 from Jones+Brother book 4.

TENSION:-

30 sts. x 44 rs. = 10 cms.
Tension dial approx. 6

FOR ABBREVIATIONS:- SEE PAGE 9.

BACK

Insert card and lock to K. row 1.
C. on in 1 x 1 Rib 124 (132 138 146) sts.
RC 000, T2/2, Rib 30 rs.

Trans. sts. to M/bed.
MT, K. 2 rs.
RC 000, work in Tuck Lace until RC
reads 130 (136 146 146) rs.

SHAPE ARMHOLE

C. off 3 sts. beg. next 2 rs.
C. off 2 sts. beg. next 6 rs.
Dec. 1 st. beg. next 8 (14 14 14) rs.
98 (100 106 114) sts. rem.
Cont. in Tuck Lace until
RC reads 210 (222 232 250) rs.

SHAPE SHOULDER

C. off 6 (6 6 7) sts. beg. next 4 rs.
C. off 6 (6 7 8) sts. beg. next 4 rs.
C. off rem. sts.

FRONT

Work as for back until
RC reads 178 (188 202 212) rs.

SHAPE NECK

Mark card row no.
Divide work, K. 56 (60 63 67) sts. at left
back onto nylon cord.
Work on right side only.
Dec. 1 st. at neck edge on next 4 (2 5 5)
rs.
K. 0 (1 1 1) r.
Dec. 1 st. at neck edge on next and ev.
foll. alt. rs. 12 (14 12 12) times.
K. 0 (4 0 8) rs.

SHAPE SHOULDER

C. off 6 (6 6 7) sts. beg. next and foll. alt.
r. K. 1 r.
C. off 6 (6 7 8) sts. beg. next and foll. alt.
r.

C. off cent. 18 (18 20 20) sts.
Reset card, rep. shaping for other side.

SLEEVES

Insert card and lock to K. row 1.
C. on in 1 x 1 Rib 58 (60 62 70) sts.
RC 000, MT 2/2, Rib 30 rs.
Trans. sts. to M/bed.
K. 2 rs. RC 000, MT,
Work in Tuck Lace.
Inc. 1 st. both ends next & ev. foll. 6th r.
until 96 (100 104 114) sts.
Cont. in Tuck Lace until
RC reads 166 (166 176 176) rs.

SHAPE TOP

C. off 3 sts. beg. next 2 rs.
C. off 2 sts. beg. next 6 rs.
Dec. 1 st. beg. next 30 (30 36 38) rs.
C. off 2 sts. beg. next 16 (18 16 18) rs.
C. off rem. sts.

COLLAR

With Tuck Lace facing mach.
Pick up 124 (128 134 138) sts. from
across front and back shapings.
T7 K. 10 rs.
T8 K. 10 rs.
T9 K. 10 rs.
T10 K. 30 rs.
C. off loosely.

TO MAKE UP

Join neck and shoulder seams.
Insert sleeves, sew side and sleeve
seams.
Press with warm iron over dry cloth.

B.K. CHARADE



AVAILABLE
IN
5 FASHION
SHADES
ON 500g CONES



17

STRIPED TOP

SIZES:-

32/34 (36/38 40/42) in. bust
81/86 (91/97 102/107) cms. bust

MATERIALS:-

1 Cone Party Poodle Cols. A & B.

TENSION:-

32 sts. x 56 rs. = 10 cms.
Tension dial approx. 3 over SS

NOTE:-

Purl side is right side of garment.

FOR ABBREVIATIONS:- SEE PAGE 9.

BACK

C. on in WY 146 (156 166) sts.
K. few rs. Carr. at left.

K. in nylon cord.
Work in stripes of Col. A, K. 10 rs.
Col. B, K. 10 rs. throughout.
RC 000, MT, K. 100 (110 120) rs.
MARK BOTH ENDS, Cont. to K. until
RC 210 (220 230).

SHAPE NECK

Push 101 (106 111) sts. at left into HP.
** Always taking yarn round the last n. in HP.
At oppos. end to carr.
Push 5 sts. into HP next & foll. alt. rs. 3 times in all. K. 5 rs.
RC 220 (230 240).
C. off 30 (35 40) sts. *
Return 45 (50 55) sts. at left into WP
K. 1 r. Carr. at left.
Rep. from ** to *

K. 1 r. across all 86 sts.
Rel. work on WY.

FRONT

K. as for back until RC 200 (210 220)

SHAPE NECK

Push 101 (106 111) sts. at left into HP.
** Always taking yarn round last n. in HP.
At oppos. end to carr.
Push 5 sts. into HP next & foll. alt. rs. 3 times in all. K. 15 rs. RC 220 (230 240)
C. off 30 (35 40) sts. **
Return 45 (50 55) sts. at left into WP.
K. 1 r. Rep. from ** to **.
K. 1 r. across all 86 sts.
Rel. work on WY.

BACK NECK EDGING

Bring forward 96 ns. With wrong side facing
Pick up sts. held on WY & 5 sts. both ends.
* RC 000, Col. A, MT+1, K. 17 rs.
T10, K. 1 r. C. off with latch tool. *

FRONT NECK EDGING

Bring forward 106 ns.
With wrong side facing pick up 86 sts. held on WY plus 10 sts. both ends.
K. as for back neck edging, from * to *.

SLEEVE EDGES

(Knit two)
Join shoulder seams.
Bring forward 126 ns.
With wrong side facing pick up sts. evenly between markers.
RC 000, Col. A, MT+1, K. 13 rs.
T10, K. 1 r. C. off with latch tool.

WELTS

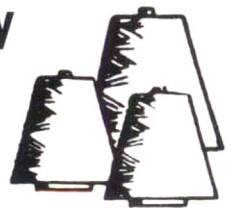
(Knit two)
Using Col. B. Two ends.
C. on in 1 x 1 rib 111 (117 123) sts.
RC 000, T1/1, K. 40 rs.
Trans. sts. to M/bed.
With wrong side facing pick up sts. evenly along back or front waist.
MT, K. 1 r. T10, K. 1 r.
C. off with latch tool.

TO MAKE UP

Join side seams.
Roll neck & sleeve edges to outside.
Do not press edges.
Press with cool iron.

B.K. 4 ply

AVAILABLE
IN
32 SHADES
ON
400g CONES



SIZES:-

32 (34 36) in. bust
81 (86 91) cms. bust

MATERIALS:-

1 Cone Party Poodle

TENSION:-

30 sts. x 56 rs. = 10 cms.
Tension dial approx. 3

NOTE:-

Knit or purl side is right side of garment.

FOR ABBREVIATIONS:- SEE PAGE 9.

FRONT

* C. on in WY 122 (130 138) sts.
K. few rs. Carr. at right.
RC 000, MY, T1, K. 8 rs.
T8, K. 1 r. T1, K. 8 rs. Turn up hem. *
RC 000, MT, K. 130 rs.

SHAPE ARMHOLE

C. off 10 sts. beg. next 2 rs.
Cont. to K. until RC 220.

DIVIDE WORK

Counting from cent. 0 to right push 24 sts. into HP. Leave next 4 sts. in WP. Push all rem. sts. into HP. Work on 4 sts. only. K. 50 rs. Push these 4 sts. into HP. Counting from cent. 0 to right leave 20 sts. in HP. Bring next 4 sts. back onto WP. Work on 4 sts. only. K. 50 rs. Push these 4 sts. into HP.

Cont. to work on 4 sts. at a time until 14 bars have been worked.

** Leave cent. 56 sts. in HP, bring sts. at left back into WP. K. 50 rs. **
Place all ns. at left into HP.
Rep. for right side.

Bring all ns. back into WP.
K. 10 rs.
C. off 25 sts. beg. next 2 rs.
T1, K. 10 rs. C. off.

BACK

K. as for front from * to *
RC 000, MT, K. 100 rs.

Divide work as for front working 170 rs. for each bar.

** Leave cent. 56 sts. in HP, bring all sts. left back into WP.
K. 30 rs.

SHAPE ARMHOLE

C. off 10 sts. beg. next r.
Cont. to K. until RC 270 **.
Place all sts. at left into HP.

Rep. from ** to ** for right side.

Bring all sts. back into WP.
K. 10 rs.
C. off 25 sts. beg. next 2 rs.
T1, K. 10 rs. C. off.

Join shoulder seams.

SLEEVES

Bring forward 160 ns.
With wrong side facing pick up sts. armhole edge.
RC 000, MT, K. 100 rs.
Rel. work on WY.

Bring forward 80 ns.
Pick up work placing 2 sts. on each n.
T2, K. 40 rs. C. off.

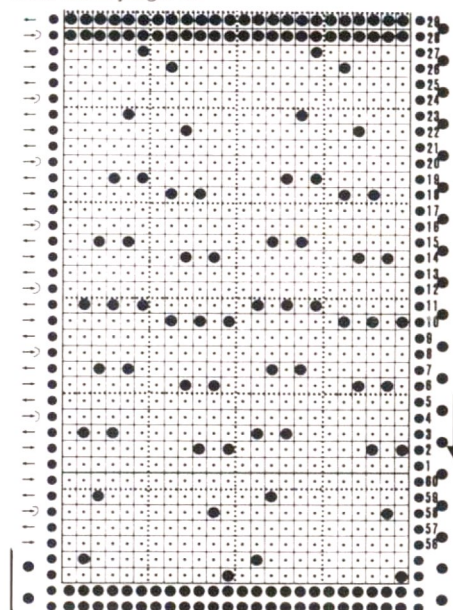
CORD

C. on by hand 5 sts.
RC 000, MT, K. 500 rs.
C. off.

TO MAKE UP

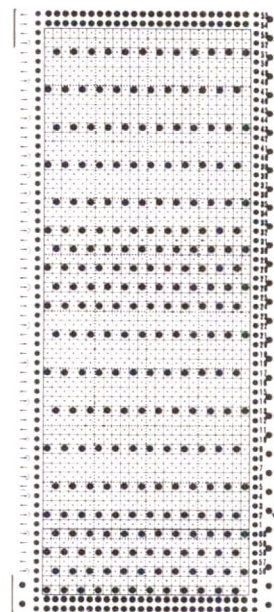
Sew side and sleeve seams.
Fold sleeve cuff to inside and slip st. into position.
Fold neck facing to inside and slip st. into position. Thread cord through hem.
Press with cool iron.

cont from page 24



CARD 14A

*Work 1 complete rotation of card K. 6rs **
rep from * to *



CARD 14B

NECKBAND

Bring forward 166 ns.
With wrong side facing, pick up 166 sts. from shorter edge of neck frill, placing 2 sts. (bars) on each n. from one front and back neck edge
RC 000, MT2, K. 1 r. T1, K. 5 rs.
T8, K. 1 r. Trans. ev. 4th st. onto adjacent ns. leaving empty ns. in WP.
T1, K. 5 rs. T8, K. 1 r. T1, K. 12 rs.
Rel. work on WY.

TO MAKE UP

Join front and back seams.
Sew side and sleeve seams.
Graft front and back neck frill.
Sew open sts. at hems to inside.
Thread velvet ribbon through holes of neckband. Starting from shoulder slip st. lace insert into V neck.
Press. Stitch two lengths of velvet ribbon across V back.

Defendj

FANTASTIC NEW
ELECTRIC LINKER!

SEE IT AT YOUR LOCAL
KNITTING MACHINE DEALER



- ★ Foot Control Operation
- ★ Silent and Fast
- ★ Easy to use
- ★ No Needle to Thread
- ★ Uses most types of Yarn
- ★ Italian Precision made
- ★ Suitable for 5 to 8 Gauge

The new Defendj Linker offers the ultimate solution to finishing knitwear for both the Home Knitter and small manufacturer.

SEND FOR FREE
COLOUR BROCHURE

Sold UK Distributor
B.S.K. Ltd.,
58 Bromham Rd.,
Bedford
Phone (0234) 52323

10



11



12



13



14



15



16





18

17